

General Info

, PRT
N 38° 43.5' W 09° 21.3' Magnetic Variation: 4.2°W
Elevation: 325'
Public, Control Tower, IFR, No Fee, Rotating Beacon,
Customs Info Unavailable
Pattern Altitude: 672 feet AGL
Fuel: 100LL, Jet A-1

Time Zone Info: GMT uses DST

Runway Info

Runway 17-35 3904' x 98' asphalt
Runway 17 (172.0°M) TDZE 326'
Lights: Edge, ALS
Runway 35 (352.0°M) TDZE 287'
Lights: Edge

Communications Info

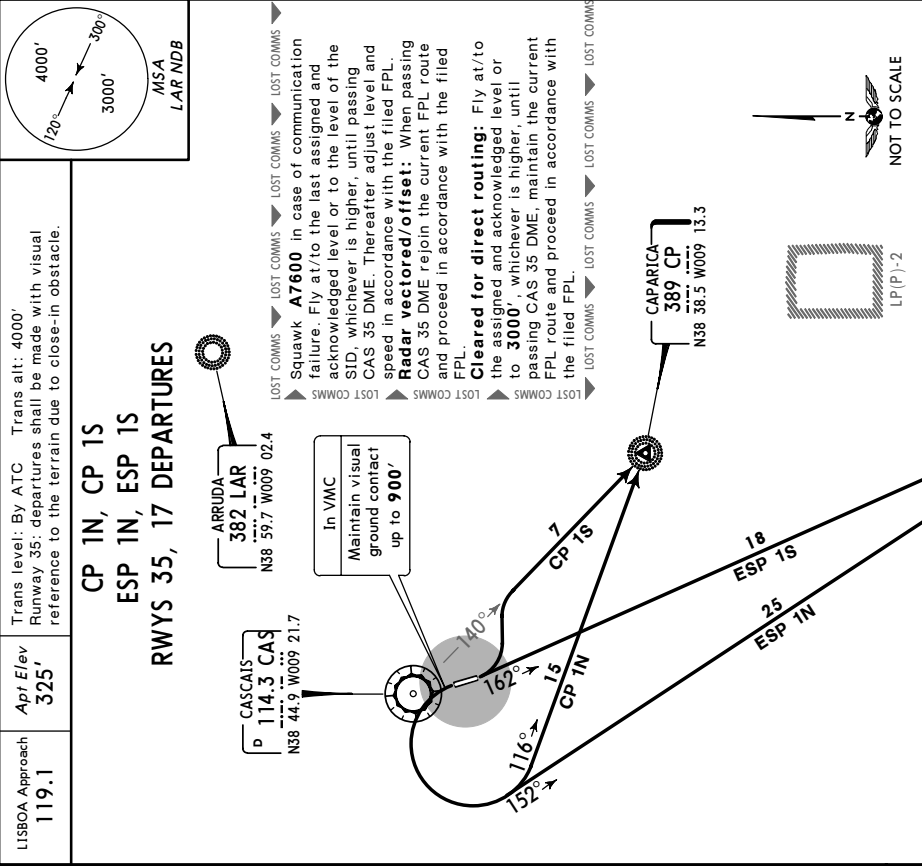
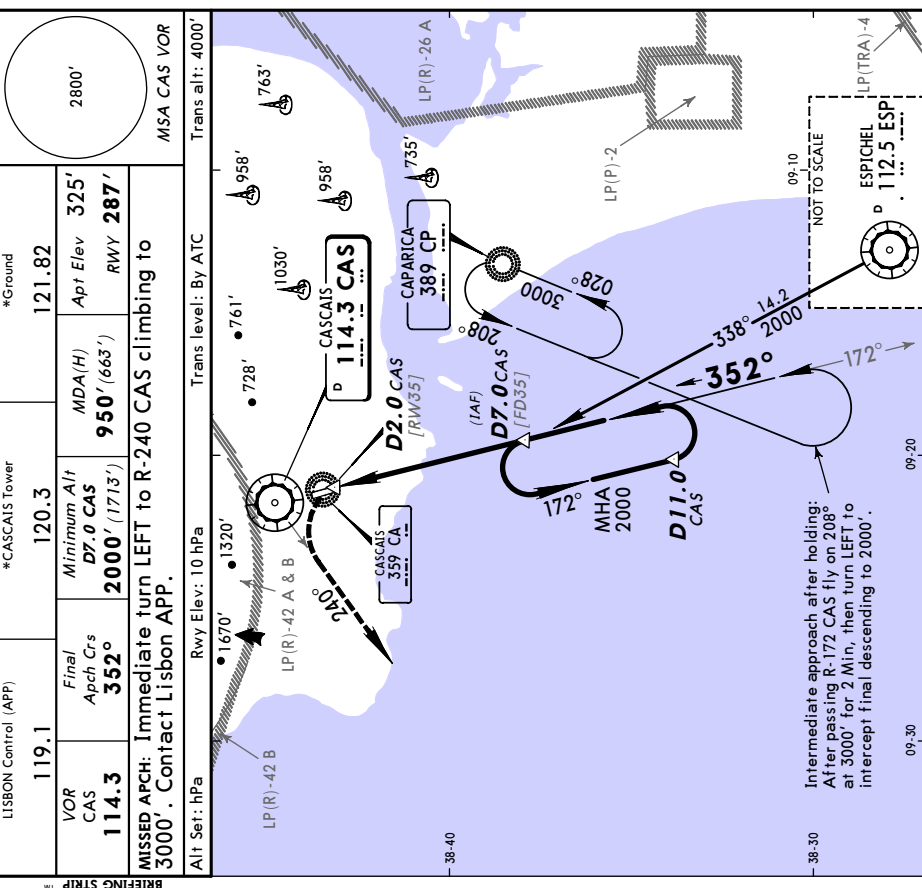
Cascais Tower **120.3**
Cascais Tower **119.9** Secondary
Cascais Tower **337.57** Military
Cascais Ground Control **121.825**

Weather Info

Notebook Info

LPCS TIRES
 LISBON Control (APP) 119.1
 VOR CAS 114.3
 *CASCAIS tower 120.3
 Final Apt Elev 325'
 MDA(H) 950' (663')
 RWY 287'
 MISSED APCH: Immediate turn LEFT to R-240 CAS climbing to 3000'. Contact Lisbon APP.
 Rwy Elev: 10 hPa
 Trans level: By ATC
 Trans alt: 4000'
 MSA CAS VOR

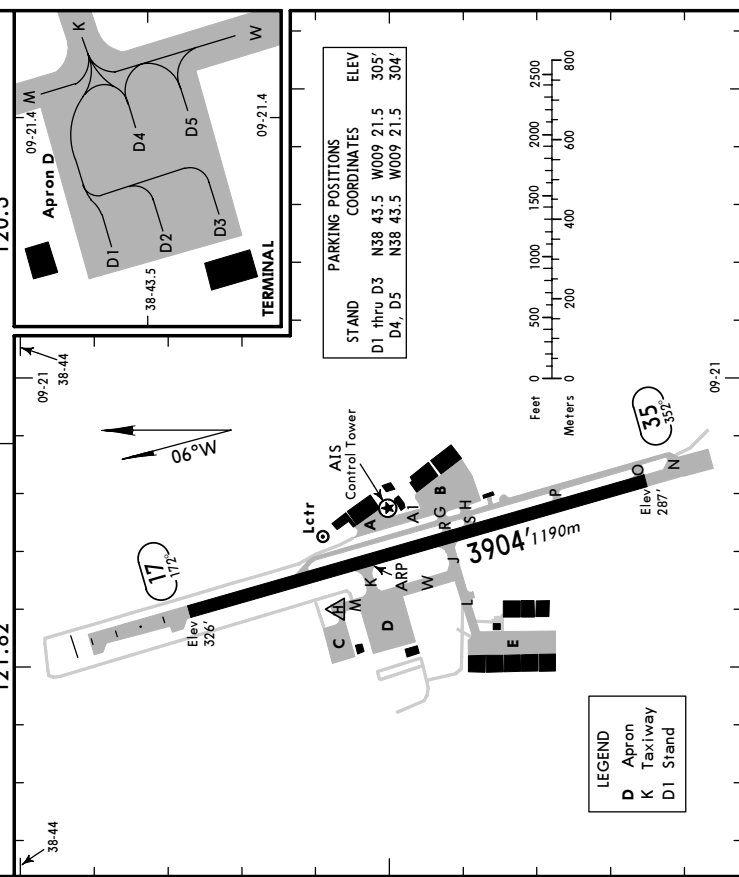
LPCS TIRES
 LISBOA Approach 119.1
 Apt Elev 325'
 Trans alt: 4000'
 Runway 35: departures shall be made with visual reference to the terrain due to close-in obstacle.
 CP 1N, CP 1S
 ESP 1N, ESP 1S
 RWYS 35, 17 DEPARTURES
 SID



CAS DME	4.0	5.0	6.0	7.0
ALTIMETER	1100'	1400'	1700'	2000'
CAS VOR				
D7.0 CAS (FD35)				
D11.0 CAS				
D2.0 CAS (RW35)				
RWY 35	287'			
RWY 17				
APAPI				
CAS				
3000'				
114.3				
R-240				

Gnd speed-Kts	70	90	100	120	140	160
Descent Gradient 5.2% or	369	474	527	632	737	843
Descent angle [3.02°]						
JAR-OPS	STRAIGHT-IN LANDING RWY 35					
C/D	NOT APPLICABLE					
C/D	NOT APPLICABLE					

LPCS **JEPPESEN** **CASCAIS, PORTUGAL**
 Apt Elev **325'** 30 MAY 03 **(3-1)** N38 43.5 W009 21.3
 174.4°/1.3 from CAS 114.3 *CASCAIS Ground



GENERAL
 Birds in vicinity of apt. When North winds more than 10 Kts, windshear probability on approach rwy 17 and take-off rwy 35. Strong windshear probability on approach rwy 35.

ADDITIONAL RUNWAY INFORMATION

RWY	USABLE LENGTHS		TAKE-OFF WIDTH
	LANDING BEYOND	Threshold	
17	RL ALS APAPI (angle 4.0°)	4757' 1450m	98'
35	RL APAPI (angle 3.0°)	4462' 1360m	30m

- ① Includes 853' (260m) paved strip in front of threshold rwy 17.
- ② Includes 558' (170m) paved strip in front of threshold rwy 35.

JAR-OPS TAKE-OFF & DEPARTURE PROCEDURE

All Rwys	
LVP must be in Force	
RCLM (DAY only) or RL	RCLM (DAY only) or RL
A 250m	400m
B	500m
C	
D	NOT APPLICABLE

① Operators applying U.S. Ops Specs: Cl. required below 300m.
DEPARTURE PROCEDURE
 All departures rwy 35 shall be made with visual reference with the terrain due to obstacle 651' located at 6234'/1900m from threshold rwy 17.
 CHANGES: Lights, Departure procedure.
 © JEPPESEN SANDERSON, INC., 2003. ALL RIGHTS RESERVED.